

NOTES:

- All channels each 75W in 4 OHM at ±26V, THD+N = 10%
- 5 x gain of 23.5dB (15x) and 1 x gain of 27.2dB (23x, woofer)
- Heatsink SK400 (SKW) designed for 2 x 75W in 4 OHM at ±26V, T ambient = 25C
- At Pout total = 55W (1/8 Prated), Tcase increases with 80 degrees; In MUTE Tcase increases with 42 degrees
- Always switch from standby to mute with S1 open, if applicable
- C16, C27, C54, C59, C68, C97 and C105 not on the list anymore

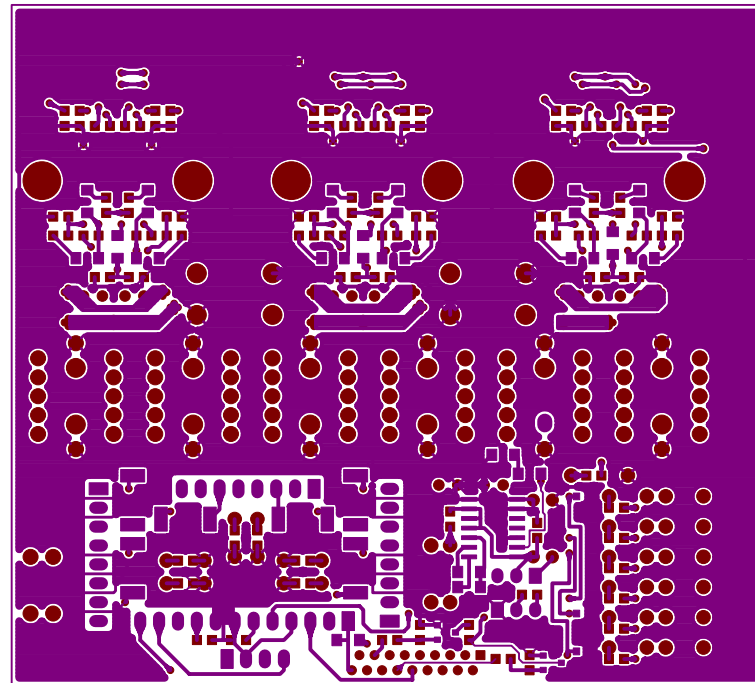
| | |
|---|--|
| PHILIPS SEMICONDUCTORS HONG KONG LTD | |
| PREPARED BY : CHOI KING LAM CSAL-HKG-DACE | |
| File: | PHILIPS TDA8920T Class-D 6-Channel 80W Power Amplifier |
| Size: | Document Number |
| A2: | VER. 900903 |
| Date: | Monday, December 10, 2001 |
| Sheet: | 1 of 1 |

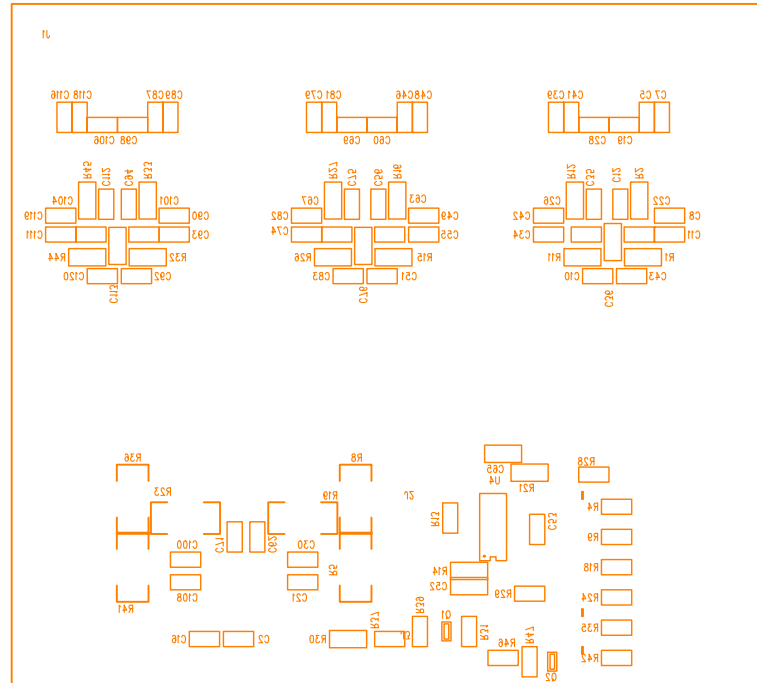
Information presented in this circuit is based on plot studies in our laboratories. It is presented in goodfaith but Philips HK Ltd assumes no liability for any consequences of its use. Its presentation does not imply a licence under and patent, trademark or copyright.

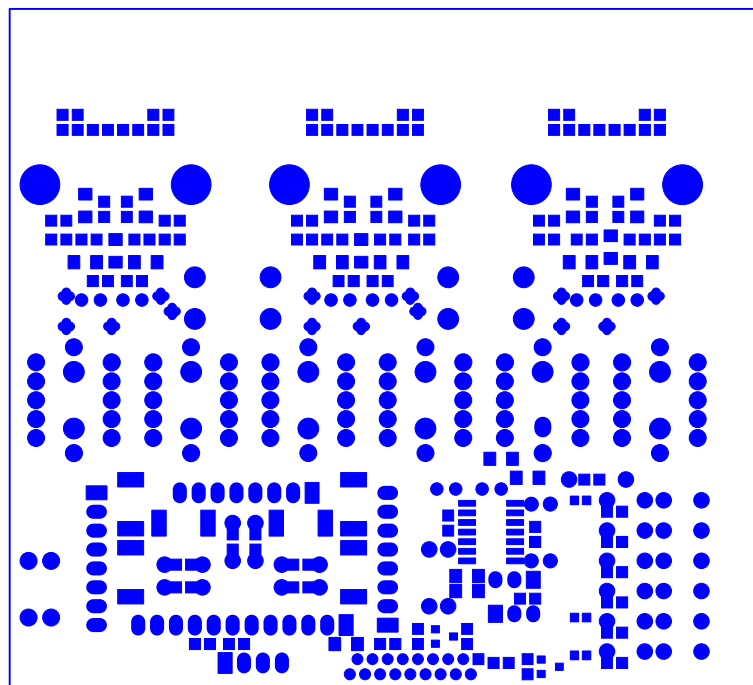


| Item | Quantity | Reference | Part |
|------|----------|---|---|
| 1 | 26 | C2,C5,C7,C8,C10,C16,C39, C41,C42,C43,C46,C48,C49, C51,C79,C81,C82,C83,C87, C89,C90,C92,C116,C118, C119,C120 | 100nF/63V PHILIPS SMD 0805 5% |
| 2 | 23 | C6,C9,C17,C32,C36,C38, C40,C47,C50,C53,C58,C73, C76,C78,C80,C85,C88,C91, C96,C110,C113,C115,C117 | 220nF/63V PHILIPS SMD 1206 5% CMC3216Y5V224E63CTA |
| 3 | 18 | C15,C20,C23,C24,C29,C31, C57,C61,C64,C66,C70,C72, C95,C99,C102,C103,C107, C109 | 470nF/63V PHILIPS MKT-367-N570 5% 5.04mm PICTH 2222-367-76474 EPCOS B32529-0474-K |
| 4 | 12 | C21,C22,C26,C30,C62,C63, C67,C71,C100,C101,C104, C108 | 15nF/100V PHILIPS SMD 0805 5% |
| 5 | 12 | C11,C12,C34,C35,C55,C56, C74,C75,C93,C94,C111, C112 | 560pF/100V PHILIPS SMD 0805 5% |
| 6 | 6 | C19,C28,C60,CC69,C98,C106 | 330pF/63V PHILIPS SMD 0805 5% |
| 7 | 2 | C52,C65 | 120pF/100V PHILIPS SMD 1206 5% |
| 8 | 3 | C37,C77,C114 | 68pF/63V PHILIPS G371 SMD 0805 5% 0805CG680J9BB |
| 9 | 8 | C1,C25,C33,C44,C45,C84, C86,C121 | 47uF/63V PHILIPS ZA LOW ESR 5% DIAMETRAL 4.5mm RUBYCON ZA 105øC PANASONIC NHG-SERIES ECA1JHG470 |
| 10 | 4 | C3,C4,C13,C14 | 470uF/35V PHILIPS ZA LOW ESR 5% DIAMETRAL 9.5mm RUBYCON ZA 105øC PANASONIC M-SERIES ECA1VM471 |
| 11 | 2 | DZ2,DZ3 | PHILIPS BZX79-B5V6 SOD27 2% |
| 12 | 1 | DZ1 | PHILIPS BZX79-B4V3 SOD27 2% |
| 13 | 6 | L3,L5,L7,L8,L9,L10 | 27uH TOKO 16RHBP-270K OR SUMIDA CDRH127-270MC COIL TOKO EP13, FERROXCUBE MATERIALS |
| 14 | 4 | L1,L2,L4,L6 | BEAD-POWER MURATA BL01RN1-A62 |
| 15 | 12 | R1,R2,R11,R12,R15,R16 R26,R27,R32,R33,R44,R45 | 5E6 PHILIPS SMD 1206 0.2W 1% |
| 16 | 6 | R5,R8,R19,R23,R36,R41 | 22E PHILIPS SMD 2512 1W 5% |

| Item | Quantity | Reference | Part |
|------|----------|--|--|
| 17 | 1 | R21 | 24E PHILIPS SMD 1206 1% |
| 18 | 2 | R30,R31 | 2K0 PHILIPS SMD 1206 1% |
| 19 | 13 | R3,R6,R7,R10,R13,R17, R20,R22,R25,R34,R38,R40, R43 | 5K6 PHILIPS SMD 0805 1% |
| 20 | 1 | R14 | 9K1 PHILIPS SMD 1206 1% |
| 21 | 11 | R9,R18,R24,R28,R29,R35, R37,R39,R42,R46,R47 | 15K PHILIPS SMD 0805 1% |
| 22 | 1 | R4 | 100K PHILIPS SMD 0805 1% |
| 23 | 1 | SW1 | FERQ SELECTOR 2.54mm PICTH ON-OFF SECME 09-03201-02-M-O |
| 24 | 1 | SW2 | MODE SELECTOR 2.54mm PICTH ON-OFF-ON KNITTER ATE-1E-M-O-M |
| 25 | 2 | Q1,Q2 | PHILIPS BC847B SOT23 PACKAGE |
| 26 | 3 | U1,U2,U3 | PHILIPS TDA8920TH HSOP24 PACKAGE CLASS-D STEREO 75W 4ohm |
| 27 | 1 | U4 | PHILIPS HEF4047BT SO14 PACKAGE |
| 28 | 1 | CON-A2 | ST4 JST-B4B-EH-A STRAIGHT 2.54mm PICTH |
| 29 | 3 | CON-A41,CON-A42,CON-A43 | ST8 JST-B8B-EH-A STRAIGHT 2.54mm PICTH |
| 30 | 1 | CON-A1 | ST12 JST-B12B-EH-A STRAIGHT 2.54mm PICTH |
| 31 | 1 | CON-A3 | ZF18 MOLEX 52030-1810 STRAIGHT 1.00mm PICTH OR SEA-ART PD06-180 |







| SIZE | QTY | SYM | PLTD |
|------|-----|-----|------|
| 0.5 | 104 | P | PLTD |
| 0.4 | 56 | Q | PLTD |
| 1.1 | 84 | S | PLTD |
| 1 | 88 | T | PLTD |
| 3.5 | 6 | U | PLTD |
| 0.7 | 18 | W | PLTD |
| 0.9 | 8 | X | PLTD |
| 0.8 | 24 | Y | PLTD |

